



annual report

Your Community Hub

The Swarthmore Public Library is the anchor of the community, as many public libraries are in their towns. In this community of learners the library is a connection point for so many things: information, literacy, discovery, technology, and (most rewarding of all) people. We have served as a free community hub since opening in 1929 and will continue to do so with your support.

Over the last year, we've helped individuals apply for jobs and celebrated with them when they were hired. We've provided outdoor events for both kids and adults. We've watched an emergent reader practice reading to Pepper the dog. We've seen neighbors embrace after not seeing each other during the majority of the pandemic. We've hosted dozens of events from candy making, a costume exchange, a destination event, and watercolor classes to Drag Queen Quizzo, a virtual pet show, and a birding excursion. We've created new collections for you to borrow filled with board games, STEM equipment, and literacy tools. I could fill the page!

There are big changes on the horizon in Swarthmore, from the proposed condos across the street from the library to the Park Avenue Community Center next door. To be honest—we're not sure how these changes will impact us. What we do know is that we are invested in and integral to Swarthmore reaching its full potential and will continue to inform, innovate, and connect our community. Thank you for your support over the last year.

See you at the library,
Amber Osborne, Director



THE TEAM

LIBRARY STAFF

Amber Osborne, Director
Carol Mackin, Circulation Manager
Kerry Doyle, Public Relations Coordinator
Jenifer Phillips, Adult Services Coordinator
Scott Schumacher, Youth Services Coordinator
Katarina Troutman, Library Associate

BOARD OF TRUSTEES

James Banko, President
Ellen Kornfield, Vice President
Laura Hunter, Secretary
Stephen Imbriglia, Treasurer
Elizabeth Brown, Trustee
David Langdon, Trustee
Tom Melvin, Trustee
David Murphy, Trustee

FRIENDS OF THE SwPL

Betty Dowling, President
Beth Fitzsimons, Vice President
Anne Papa, Treasurer

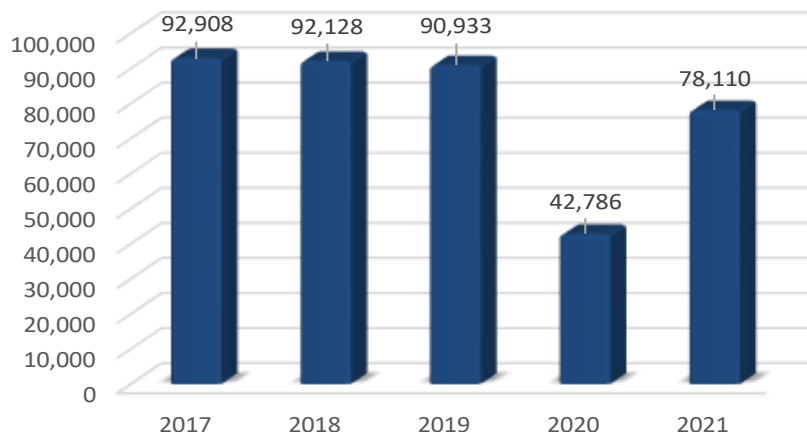
IN HOUSE VOLUNTEERS

Meredith Flower
Kate Francis
Bob Frick
Carol Kennedy
Maria Mooney
Mimi Nenno
Anne Papa
Bern Rehberg
Sarah Rehberg
Carol Savery
Beth Soch
Helene Van Hoeven

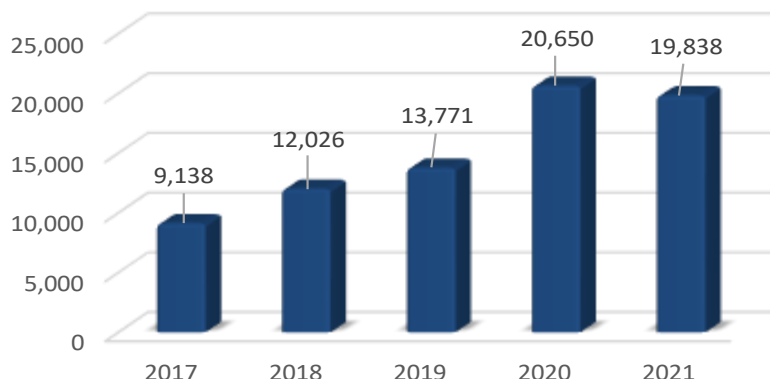


BY THE NUMBERS

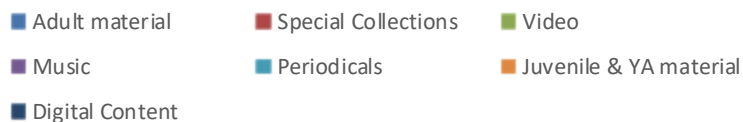
TOTAL CIRCULATION: PHYSICAL COLLECTION



TOTAL CIRCULATION: DIGITAL COLLECTION



CIRCULATION BY FORMAT



CIRCULATION

Total Circulation: 97,948

Physical Collection

Adult material: 24,985
 Magazines: 600
 Audiobooks: 1,146
 Music: 857
 Video: 4,607
 Special Collections: 931
 (Museum & Parks Passes, eReaders, Chromebooks, hot spots, board games, & LEAP Kits)
 Juvenile material: 41,672
 Young adult material: 3,312

Digital Collection

eBooks (Overdrive): 16,563
 Streaming (Hoopla): 2,703
 eMagazines: 572

Inter Library Loan

In county material sent: 8,226
 In county material received: 11,327
 Out of county material sent: 114
 Out of county material received: 120
 (Received items not counted in total circulation)

As services and hours returned to normal, our circulation increased. 2021 circulation is still 14% below the pre-pandemic level but 83% above 2020 circulation.

BY THE NUMBERS CONTINUED

EVENTS & PROGRAMS

As 2021 unfolded, we were able to introduce in person, outdoor programming in addition to virtual events. We loved seeing our attendees in person again!

For children & families

- ⇒ 229 programs attended by 4,414 people
- ⇒ 38 Science, Technology, Engineering, & Math (STEM) programs
- ⇒ Highlights! Virtual pet show, Over the Rainbow storytime, spin art, Legos on the Lawn, and a Grinch Holiday Celebration

For adults

- ⇒ 187 programs attended by 5,721 attendees
- ⇒ 28 Science, Technology, Engineering, & Math (STEM) programs
- ⇒ Highlights! Author talk with Alyssa Cole, Birding with Laura, Drag Queen Quizzo, Watercolor with Anna, destination event to the Rosenbach



MEMBERSHIP, COLLECTION, & COMPUTERS

Membership

- ⇒ Registered patrons 4,137

Collection

- ⇒ Total collection of 51,497 items

Computer use

- ⇒ 1,463 hours (does not include untracked wi-fi use)

65% of
Swarthmoreans
have library
cards.

2021 HIGHLIGHTS

POLLINATOR GARDEN

A joint effort between three library employees brought us the Pollinator Garden. In the spring the garden was filled with flowers and plants that attracted bees and other pollinators. As the weather turned cooler, the garden turned into a wind garden filled with colorful pin wheels decorated by children. The garden has also given opportunity for programming and we've held storytimes and crafting sessions around it.



COSTUME EXCHANGE

A successful new event this year was our costume exchange. We collected gently used costumes through the month of September, then displayed them in the library. Anyone was able to give or take a costume from the collection.

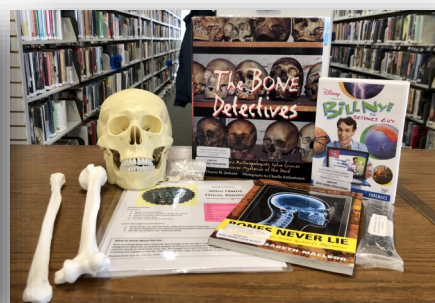
LAWN GAMES @ THE LIBRARY

In July, the library participated in the town wide Nights in the Ville by hosting lawn games such as badminton, corn hole, and water pong on the library lawn. What fun!



NEW COLLECTIONS: LEAP KITS, CHROMEBOOKS, BOARD GAMES

Thanks to funding from the CARES Act, we purchased 3 Chromebooks that our patrons are able to borrow. We also created a collection of board games like Sushi Go, Simpson's Monopoly, and many others. Finally, with funding from the Friends of the SwPL, we debuted a large collection of LEAP Kits. Leap Kits are STEM and literacy kits that include books, toys, equipment, and technology that encourage kids to learn, explore, and play (LEAP)!



2021 HIGHLIGHTS CONTINUED

GRINCH HOLIDAY CELEBRATION

On December 4, we held a super fun event in conjunction with Swarthmore Town Center's Home for the Holidays. The outdoor event featured a holiday celebration storytime with a guest appearance by the Grinch. Photos with the Grinch, then activity stations followed storytime—participants made Grinch slime, ball ornaments, and played pin the heart on the Grinch. Roughly 175 people came out to our celebration!



ROSENBACH MUSEUM VISIT

As part of our Aging in Place Initiatives (funded by a grant from Swarthmore Borough), we sponsored a destination trip to the Rosenbach Museum in October. Twenty library patrons took a special behind the scenes tour of the Rosenbach's collection of rare books, manuscripts, and art.



AUTOMATIC RENEWAL

In September, we debuted automatic renewal. This system wide initiative automatically renews eligible materials without any action by patrons. You have enough to worry about, renewing library materials shouldn't be one of them!

NEW RESIDENT GIFTS

Each new homeowner in Swarthmore now receives a postcard welcoming them to town and inviting them to visit the library. Upon visiting, the new resident receives a welcome packet with information about the library, a library card application, and a special gift. They also are able to go on a library tour that will share our collections—both physical and digital—programs, and other services.

HOCUS POCUS EVENT

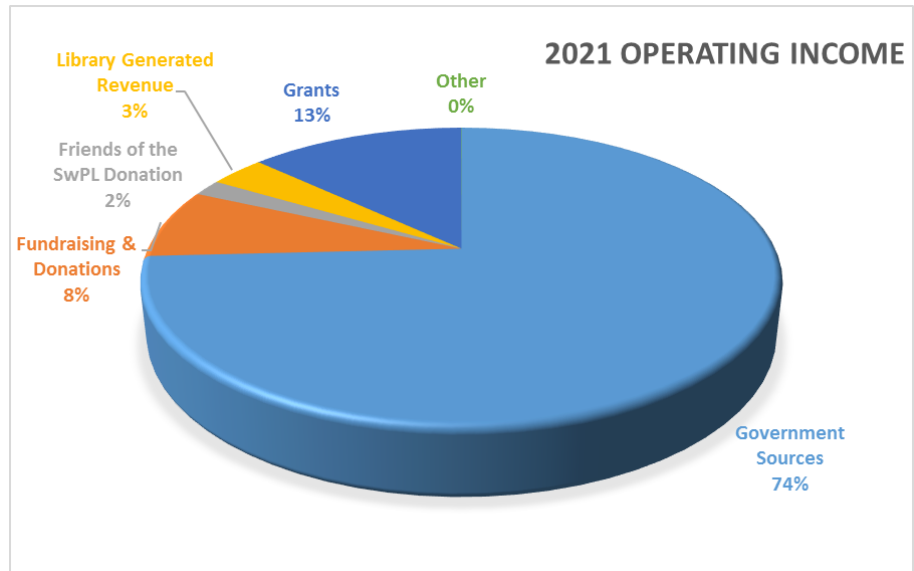
In October, we invited families to attend an outdoor movie showing of Hocus Pocus, but the fun didn't stop there! We also supplied games, activities and snacks for our 80 movie goers.



OPERATING INCOME & EXPENSES

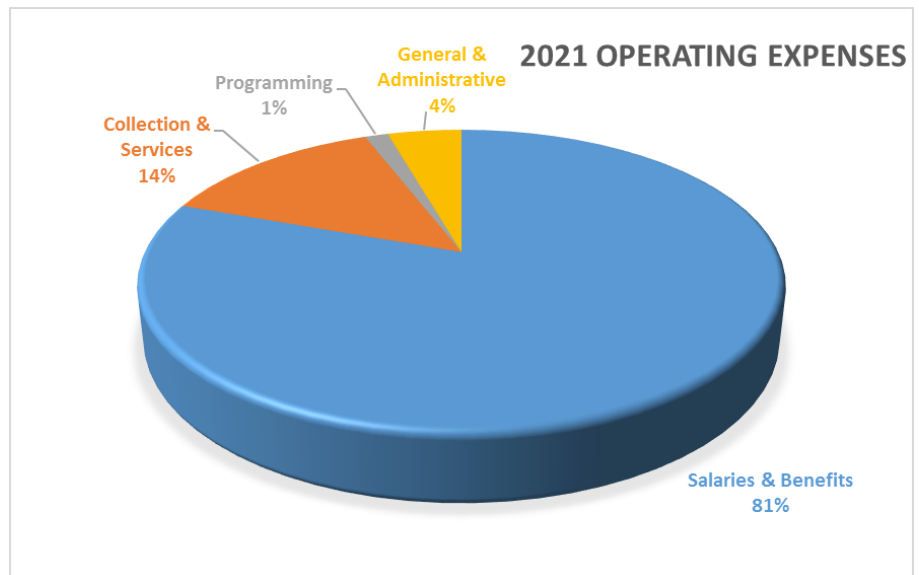
Operating Income: \$304,773

Government Sources	\$226,124
Fundraising & Donations	\$ 22,985
Friends of the SwPL Donation	\$ 5,429
Library Generated Revenue	\$ 10,321
Grants	\$ 39,836
Other	\$ 79



Operating Expenses: \$301,382

Salaries & Benefits	\$242,613
Collection & Services	\$ 41,151
Programming	\$ 4,196
General & Administrative	\$ 13,421



WHAT IS SwPL'S ACTUAL WORTH?

\$2,267,851

Adult Books Borrowed	\$427,363
YA Books Borrowed	\$ 39,744
Children's Books Borrowed	\$703,358
Audiobooks Borrowed	\$ 14,368
Interlibrary Loan Requests	\$208,500
eBooks Downloaded	\$248,445
Magazines Read	\$ 5,860
Newspapers Read	\$ 7,125
Movies Borrowed	\$ 18,428
CDs Borrowed	\$ 8,527
Hoopla Downloads	\$ 8,082
Museum Passes Borrowed	\$ 11,640
Adult Program Attendance	\$ 85,815
Youth Program Attendance	\$ 30,898
Computer Use	\$ 17,556
Database Searches	\$411,967
Reference Assistance	\$ 17,472

This value calculator shows how much the services the library provides would cost if you had to pay for them directly.

<https://www.chelmsfordlibrary.org/services/library-use-value-calculator/>

In 2021, each Swarthmorean contributed \$30.82 toward library funding.

(Calculation based on Swarthmore Borough's 2021 contribution and the population of Swarthmore.)

We continue to have the highest circulation per capita in Delaware County, at 15 checkouts per resident.

\$358 is the actual value received by every Swarthmorean from library services in 2021.

(Calculation based on the value calculator above and the population of Swarthmore.)