



ANNUAL REPORT 2018

Swarthmore Public Library

121 Park Avenue, Swarthmore PA 19081

610-543-0436 swarthmore@delcolibraries.org

www.swarthmorepubliclibrary.org

A MESSAGE FROM...

James Banko, Board President



The Board of Trustees of the Swarthmore Public Library is entrusted with the task of ensuring that the Swarthmore Library continues its tradition of excellence in service to the community. The Library's finances, managed by Library Director Amber Osborne, had been overseen by Board Treasurer Bern Rehberg, who served on the Library's Board of Trustees for 12 years. Bern Rehberg retired from the Board at the end of 2018 and his services will be missed!

The Library continues to have the highest per capita circulation rate of all public libraries in Delaware County. If you include the college population, 50% of Swarthmore residents hold library cards; 67% when the population of the college is not counted. Compared to many other Delaware County Libraries, particularly ones comparable to our size, the Swarthmore Library is open more hours per week and we are the only Delaware County Library opened year round on Sundays. Thanks to a generous grant from the Rotary Club of Swarthmore in 2018, the Library has a new collection of 24 eReaders. In 2018, the Library also provided programs for 11,554 participants!

In 2018, the Board worked with a Library consultant to plan for the Library's future. Of course, what the Library most desperately needs is to expand its physical premises. Finding the money for such expansion will require funding. Two thousand nineteen is a great year for renewed efforts for fundraising because the Library will celebrate its 90th birthday this year.

The Board is proud of the Library's achievements but recognizes how vital it is for the Board to continue to support the Library in its efforts to anticipate and meet the needs of its patrons and the community in the future.

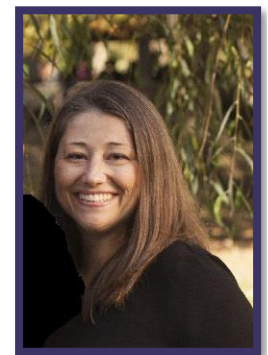
Amber Osborne, Library Director

I like to say that Swarthmore Public Library is small but mighty.

According to the library value calculator created by the American Library Association (page 8), the Swarthmore Public Library provides over \$2 million of free services to Swarthmoreans and nearby residents each year. The Library does all this on a budget of about \$315,000. Swarthmore residents contribute roughly \$35 per year to our library through taxes. They spend \$35 and get \$330 worth of services. That is quite a deal!

This May, the Swarthmore Public Library will have been in operation for 90 years. What began as a one room children's library open 13 hours per week with just over 3,000 books, now boasts a collection of 57,000 items of all kinds; over 100,000 circulations per year (the highest circulation per capita of all libraries in Delaware County); programs that reached over 11,000 people last year; computers, eReaders, eBooks, and more! The only certain thing in our world is change. Just as libraries have across the world, Swarthmore Public Library has lived that sentiment.

One thing that every library needs is supporters. We need people who believe a library is a necessity within the community. If every person who believes that libraries are crucial to an equal, educated society would take one action to support their local library, it would be a big help. We are intent on expanding our services, as well as our position as a valuable resource within Swarthmore and nearby communities. I hope you will join us in this cause.



SO MANY PEOPLE TO THANK...

Friends of the Swarthmore Public Library

The Friends of the SwPL are integral to our ability to provide great services and programs to our community. Each year the hard work of the members of the Friends group in organizing book and bake sales and fundraising appeals helps the Library meet its goals. In 2018 alone the Friends has provided nearly 19% of our budget, in addition to sponsoring awesome services such as the Museum and Parks Pass Program.

The Friends' Board

Carol Kennedy, President

Jeannine Anckaitis, Vice President

Anne Papa, Treasurer

Madelon Sheff, Secretary



Library Volunteers

Our volunteers have spent 3,315 hours helping the Library provide excellent service to our patrons. We cannot do what we do without you. Thank you!

Jeannine Anckaitis

Polly Bech

Marnie Berkowitz

Nancy Carroll

Patti Clymer

Louise Coffin

Lois DeLapp

Betty Dowling

Sue Dyson

Beth Fitzsimons

Meredith Flower

Sally Fullam

Kate Francis

Kathy Gerner

Moirah Hahn

Virginia Williams Joyce

Carol Kennedy

Alison Manaker

Bob Mayer

Maria Mooney

Eve Mountford

Mimi Nenno

Anne Papa

Dorothy Philipson

Marisela Rechner

Bern Rehberg

Sarah Rehberg

Carol Savery

Diane Scott

Jenny Shulbank

Betty-Barbara Smart

Beth Soch

Marty Spiegel

Helene Van Hoeven

Sally Wadleigh

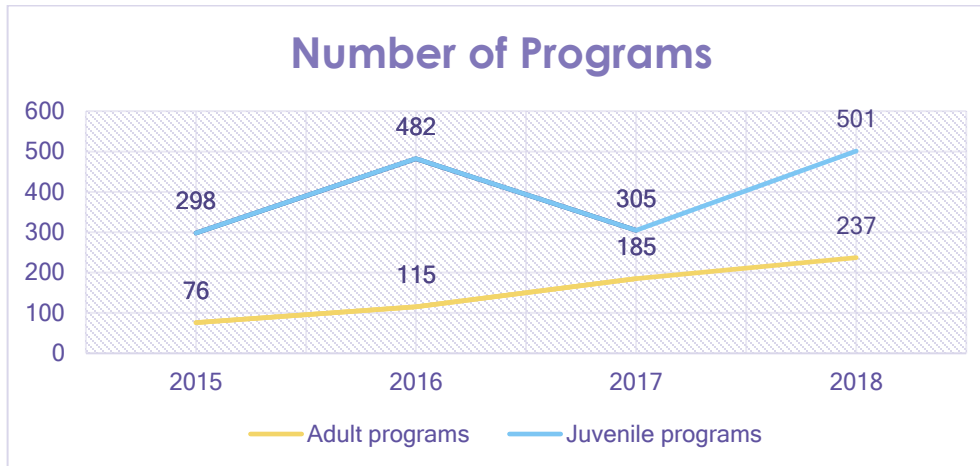
Betty Wallace

BY THE NUMBERS

Programming

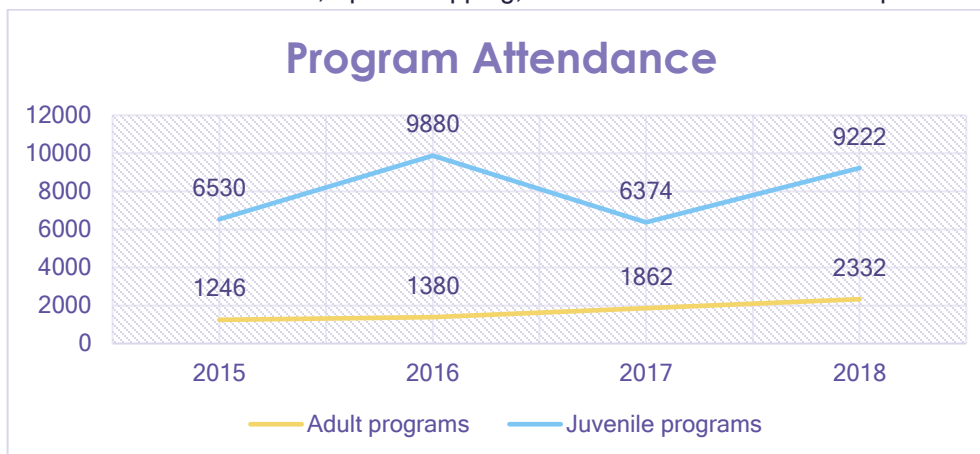
For children and families

- 501 programs attended by 9,222 people
- Highlights include Wonderful Wednesday series, Learn to Draw, T-Rex Tea Party, Summer Quest Scavenger Hunt, Book r' Treat, and the Pen Pal Program.



For adults

- 237 programs attended by 2,332 people
- Highlights include the Video Lecture Series, Mystery Mondays, Pride Day events, North Sea Gas Concert, Crack the Constitution, Speed Repping, and the Mindfulness Workshop.



Science, Technology, Engineering & Math (STEM)

- As part of our programming for children, families and adults, we held 116 programs that helped our community learn science, technology, engineering and math.
- 42 programs for adults; 74 programs for children and families
- Highlights include the Cookbook Club, Science in the Summer, a performance by Sciencetellers, and Video Lecture Series about botany and geology.

BY THE NUMBERS, PAGE 2

Circulation

Total Circulation: 104,253

Adult: 36,707

Periodicals: 2,096

Music: 2,695

Video: 5,630

Museum & Parks Passes: 630

EReaders: 78

Picture Books: 18,976

Juvenile: 22,357

Young Adult: 3,804

eBooks (Overdrive): 9,368

Streaming & Databases (Hoopla &

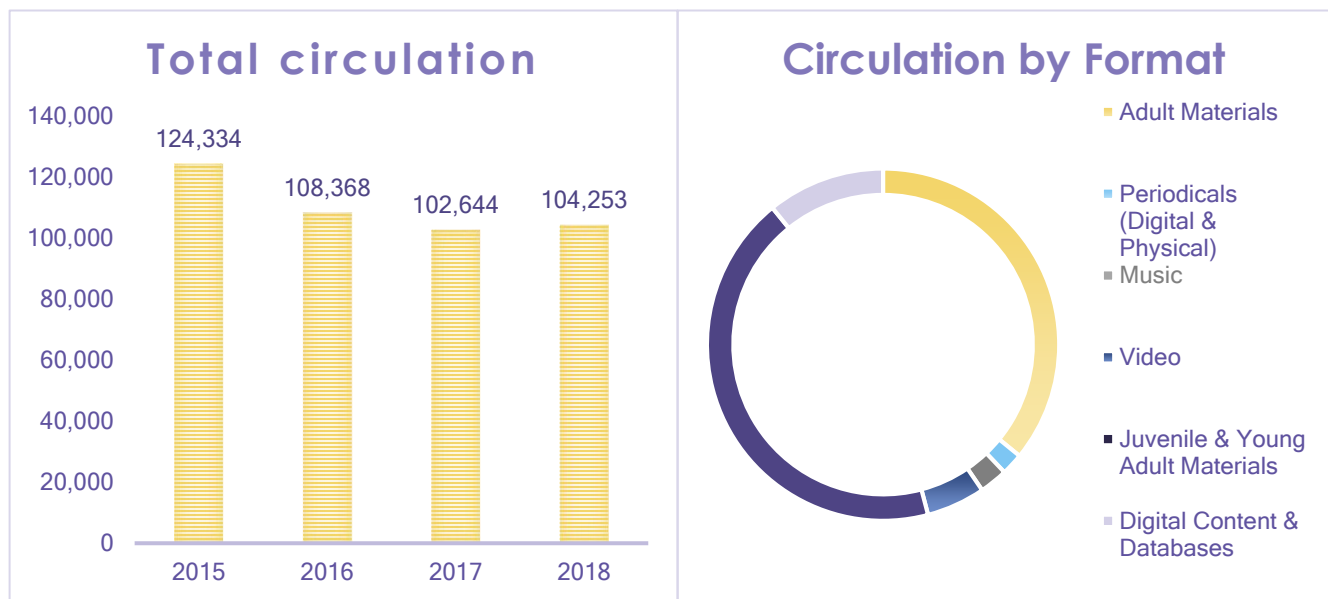
Encyclopedia Britannica): 1,912

In County Materials Received: 11,639

In County Materials Sent: 8,240

Out of County Materials Received: 130

Out of County Materials Sent: 139



Membership & Collection

Registered patrons: 3,070

67% of Swarthmore's population (excluding Swarthmore College)

50% of Swarthmore's population (including Swarthmore College)

Computer Usage: 5,155 hours (does not include untracked Wi-Fi usage)

Total Collection: 56,897

Volumes added: 3,049

Volumes withdrawn: 3,303

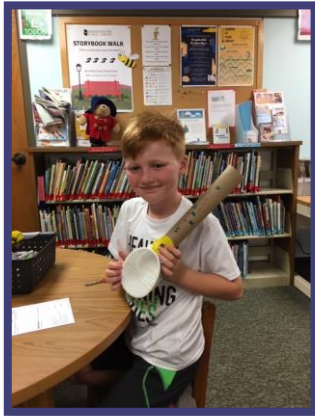


SERVICE & PROGRAM HIGHLIGHTS

Our mission is to empower our community to read, meet, discover, and grow.

Read

- Thanks to a generous grant from the Rotary Club of Swarthmore, we were able to develop a brand new collection of 24 eReaders. We now have eReaders for adults, children, and teens all preloaded with popular eBook titles.
- We launched a Book Sharing program with local preschools where once a month the preschool gets a delivery of librarian curated books for teachers and children to share.



Meet

- As part of our civic engagement initiatives, we held a Speed Repping event where our community members had the chance to sit and chat with local government representatives. Five representatives from Swarthmore Borough Council and Delaware County Council, spoke about local government and answered attendees questions.
- Through our Swarthmore Storycorps project, we met and recorded interviews with amazing Swarthmoreans such as Alice “Putty” Willets, Calvin Coleman, and Betty Ann Wilson. We also did numerous brief interviews with shoppers at the Farmer’s Market where many great Swarthmore stories were shared.

MORE SERVICE & PROGRAM HIGHLIGHTS

Discover

- As part of our Aging in Place initiatives sponsored by Swarthmore Borough, we took 20 community members to Mount Cuba Botanical Gardens. They spent the day walking through shady wooded



paths, strolling down sunny meadows, and resting by tranquil ponds. The tour ended with a picnic and some exploration before returning to Swarthmore.

- We always have a lot of fun holding events and programs for our community's children and families and 2018 was no different. Our Full STEAM Ahead Club is going strong, as is our summer series, Wonderful Wednesdays. This year during Wonderful Wednesdays, we welcomed performers such as Mystic Drums, Makin' Music, and

Puppets Pizazz. We debuted a monthly Lego Club and held one-time specials such as the T-Rex Tea Party and Book r' Treat. We also created a way cool scavenger hunt that asked kids to follow clues all around Swarthmore; over 100 kids took the challenge and completed the hunt!

- Our wide variety of adult events bring people looking to learn, socialize, create, listen, and have fun. In 2018 we continued our monthly events such as Film Discussion Group, Video Lecture Series, and In Stitches, while adding others such as Mystery Mondays. We also held popular one-time events like Crack the Constitution and voter information with the League of Women Voters. Our Sharon Ford Concert & Lecture series made a strong showing with two live music shows and a Mindfulness Workshop with the Penn Mindfulness Program.



Grow



- In partnership with National Voter Registration Day, the library held a 3-day voter registration drive around Swarthmore. Library staff and volunteers set up tables at various points around town to encourage and assist people in registering to vote.

- To show our commitment to serving our community, we created a Service Philosophy to guide our staff and volunteers. The Service Philosophy Statement sums up our position, "In support of Swarthmore

Public Library's mission to empower our community to read, meet, discover, and grow, our staff and volunteers are dedicated to providing outstanding service based on respect and empathy for the diverse backgrounds and needs of our community. Staff and volunteers work as a team to provide positive, consistent, and helpful service."

WHAT IS SWARTHMORE PUBLIC LIBRARY WORTH?

\$2,063,602
\$330 per Swarthmorean

Adult Books Borrowed	\$575,518
Young Adult Books Borrowed	\$ 45,648
Children's Books Borrowed	\$686,103
Audiobooks Borrowed	\$ 44,561
Interlibrary Loan Requests	\$294,225
eBooks Downloaded	\$154,118
Magazines Read	\$ 14,225
Newspapers Read	\$ 19,000
Movies Borrowed	\$ 22,520
CDs Borrowed	\$ 26,815
Adult Program Attendance	\$ 34,980
Children's Program Attendance	\$ 64,554
Museum Passes Borrowed	\$ 12,600
Computer Use (excluding wifi)	\$ 61,860
Database Searches	\$ 1,975
Reference Assistance	\$ 4,900

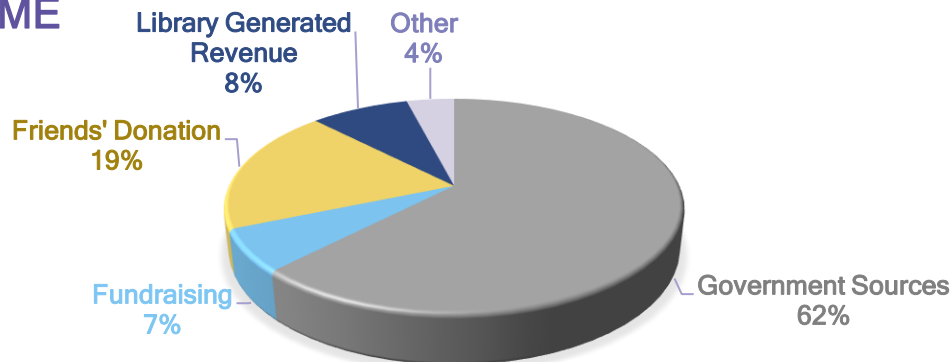
American Library Association, Library Value Calculator
<http://www.ala.org/advocacy/library-value-calculator>

2018 OPERATION INCOME & EXPENSES

Operating Income: \$310,826

Government Sources	\$193,701
Fundraising	\$ 19,706
Friends of the SwPL donation	\$ 59,059
Library Generated Revenue	\$ 25,859
Other	\$ 12,500

2018 OPERATING INCOME



Operating Expenditures: \$316,572

Salaries & Benefits	\$245,456
Collection & Services	\$ 43,618
General & Administrative	\$ 20,669
Programming	\$ 6,829

2018 OPERATING EXPENDITURES

